

SPECIAL HIGH CREEPAGE BUSHING ASSEMBLIES 46 KV CLASS, 250 KV BIL LEAKAGE DISTANCE 42"

The electrical ratings given are based on use in a liquid filled transformer with the lower end of the bushing und For maximum performance of bushing, the gap between the porcelain and the stud must be flooded with oil. In the bushing must be mounted on the apparatus, then evacuated to 5mm vacuum while the equipment is being fil Bushing is produced of top quality electrical grade wet process porcelain. Gray glaze is standard unless otherwi Nitrile (Buna-N) gasket is standard. For ordering assemblies with cork and rubber composition gaskets, add the part number.

The clamp is made of ZA-12 alloy. Bushing can be furnished upon request with clamp made of silicon bronze.

FIG. 1

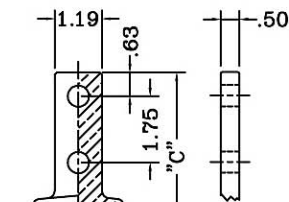
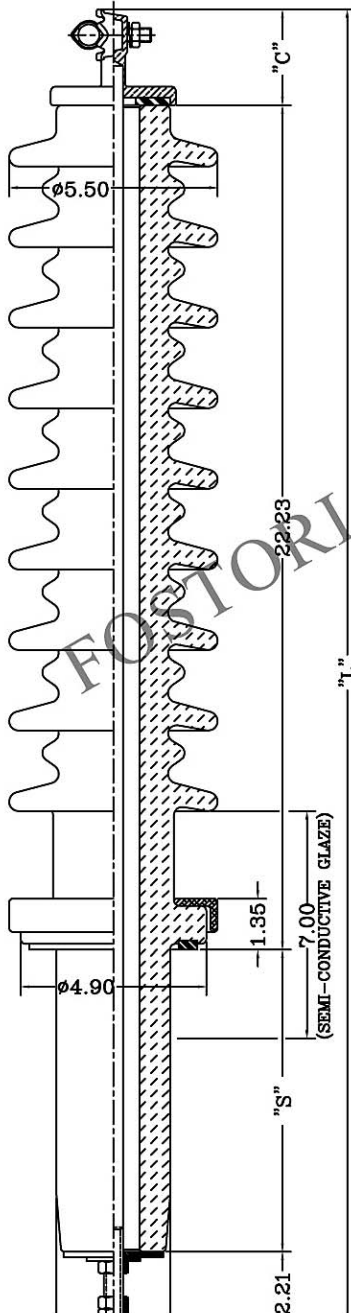


FIG. 2

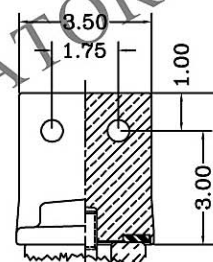


FIG. 3

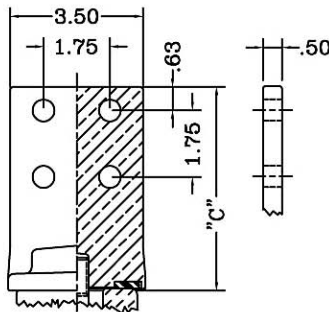


FIG. 4

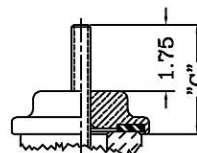
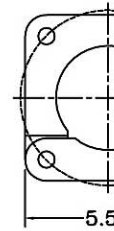


FIG. 5

Ø.44 HOLES ON Ø



2 PIECE EY

PART NO.	FIG. NO.	CONNECTOR TYPE	STUD SIZE AND THREAD	CURRENT RATING	"L"
346202	1	5/8" EYEBOLT	.500-13 UNC-2A	208 A	34.9
346203	1	5/8" EYEBOLT	.500-13 UNC-2A	208 A	37.8
346212	2	"B" TYPE	.500-13 UNC-2A	208 A	36.8
346213	2	"B" TYPE	.500-13 UNC-2A	208 A	39.7
346224	3	"G" TYPE	.750-16 UNF-2A	600 A	36.4
346225	3	"G" TYPE	.750-16 UNF-2A	600 A	39.2
346234	4	"H" SPADE	.750-16 UNF-2A	600 A	37.7
346235	4	"H" SPADE	.750-16 UNF-2A	600 A	40.6