

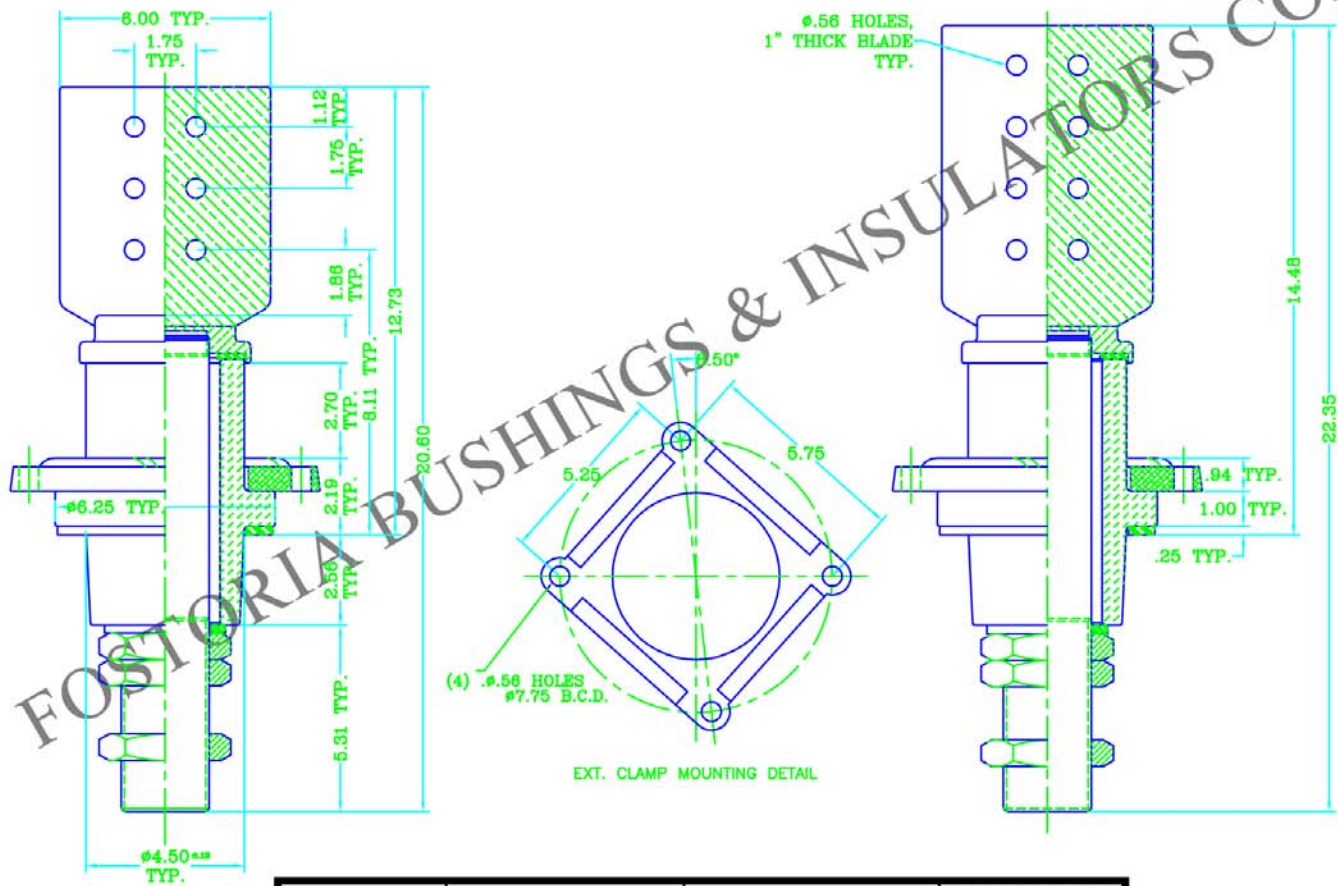


HC-9

**HIGH CURRENT BUSHING ASSEMBLIES  
1.2kV CLASS, 45kV B.I.L.  
AIR TO OIL APPLICATION**

The electrical ratings given are based on use in a liquid filled transformer with the lower end of the bushing under oil level. Bushing is produced of top quality electrical grade wet process porcelain. Gray glaze is standard unless otherwise specified. Nitrile (Buna-N) gasket is standard. For ordering assemblies with the cork and rubber composition gaskets, add the suffix "C" to the part number.

Spade is made of bus bar copper brazed to a copper alloy base and electro tin-plated. Bushing can be furnished upon request with different types of top and bottom terminals.



PART NO.	SPADE TYPE	STUD SIZE	CURRENT RATING
321010	6 HOLE	2.25-12 UN-2A	3300 A
321015	8 HOLE	2.25-12 UN-2A	3300 A
321020	6 HOLE	2.50-12 UN-2A	3825 A
321025	8 HOLE	2.50-12 UN-2A	3825 A
321030	6 HOLE	3.00-12 UN-2A	5400 A
321035	8 HOLE	3.00-12 UN-2A	5400 A