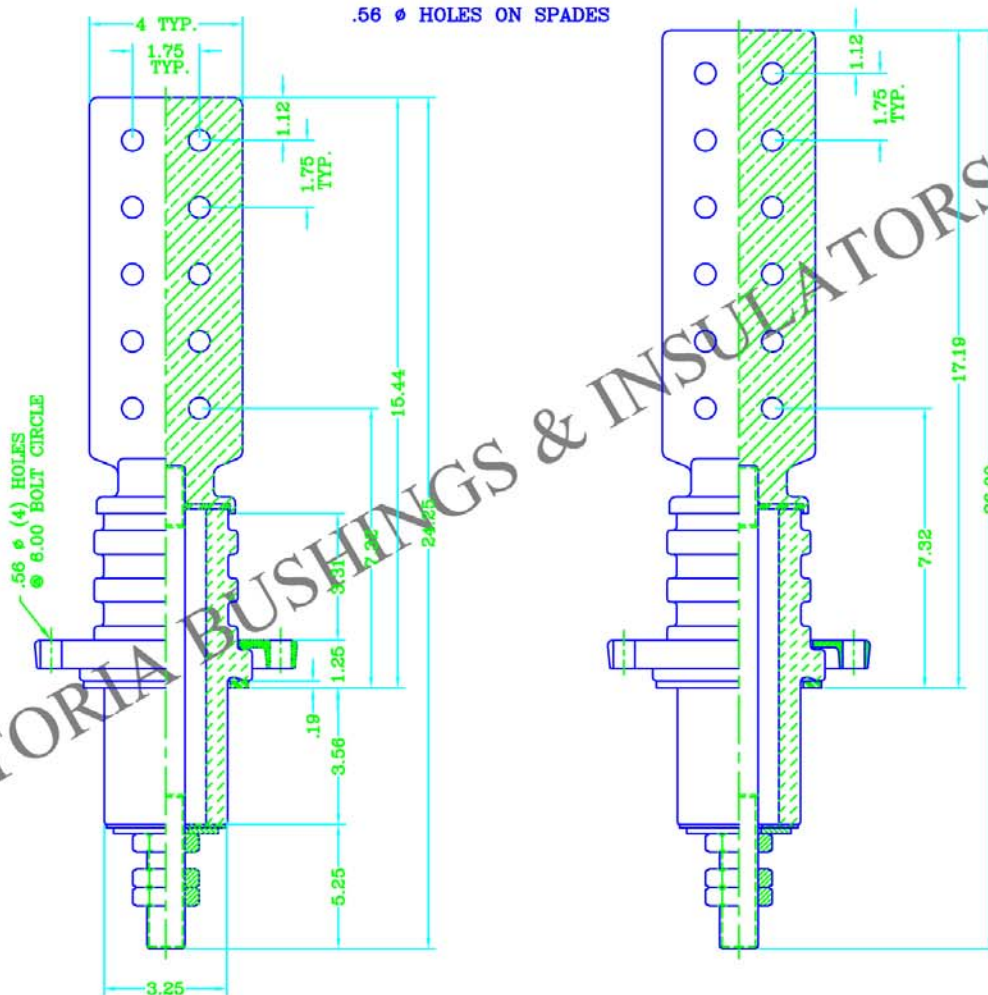


HIGH CURRENT BUSHING ASSEMBLIES 2.5 kV CLASS, 60 kV B.I.L., 4.00" MIN CREEP SIDEWALL OR COVER MOUNTED

The electrical ratings given are based on use in a liquid filled transformer with the lower end of the bushing under oil level. Bushing is produced of top quality electrical grade wet process porcelain. Gray glaze is standard unless otherwise specified. Nitrile (Buna-N) gasket is standard. For ordering assemblies with the cork and rubber composition gaskets add the suffix "C" to the part number.

All spade castings consist of 95% min. conductivity copper and are tin-plated. Bushings can be furnished upon request at a discounted price, with spades made of lower conductivity copper alloys such as brass, bronze, etc.

Bushings are designed for mounting in 3.38" diameter hole.



FOSTORIA BUSHINGS & INSULATORS CORP.

PART NO.	CONNECTOR TYPE	CONNECTOR THICKNESS	STUD SIZE AND THREAD	CURRENT RATING
320163	10 HOLE SPADE	0.50	1.00-14 UNS-2A	800 A
320164	10 HOLE SPADE	0.50	1.13-12 UNF-2A	1000 A
320165	10 HOLE SPADE	0.50	1.25-12 UNF-2A	1200 A
320166	10 HOLE SPADE	0.50	1.50-12 UNF-2A	1600 A
320167	10 HOLE SPADE	0.75	1.75-12 UN-2A	2400 A
320168	10 HOLE SPADE	0.75	2.00-12 UN-2A	3000 A
320169	10 HOLE SPADE	0.75	2.13-12 UN-2A	3350 A
320173	12 HOLE SPADE	0.50	1.00-14 UNS-2A	800 A
320174	12 HOLE SPADE	0.50	1.13-12 UNF-2A	1000 A
320175	12 HOLE SPADE	0.50	1.25-12 UNF-2A	1200 A
320176	12 HOLE SPADE	0.50	1.50-12 UNF-2A	1600 A
320177	12 HOLE SPADE	0.75	1.75-12 UN-2A	2600 A
320178	12 HOLE SPADE	0.75	2.00-12 UN-2A	3200 A
320179	12 HOLE SPADE	0.75	2.13-12 UN-2A	3600 A